

SONY[®]

OPTICAL DISC ARCHIVE FILE MANAGER

ODS-FM1



Optical Disc Archive

INSTALLATION GUIDE English

1st Edition (Revised 8)

NOTICE TO USERS

Documentation © 2013 Sony Imaging Products & Solutions Inc.

All rights reserved. This manual or the software described herein, in whole or in part, may not be reproduced, translated or reduced to any machine readable form without prior written approval from Sony Imaging Products & Solutions Inc.

SONY IMAGING PRODUCTS & SOLUTIONS INC. PROVIDES NO WARRANTY WITH REGARD TO THIS MANUAL, THE SOFTWARE OR OTHER INFORMATION CONTAINED HEREIN AND HEREBY EXPRESSLY DISCLAIMS ANY IMPLIED WARRANTIES OF MERCHANTABILITY OR FITNESS FOR ANY PARTICULAR PURPOSE WITH REGARD TO THIS MANUAL, THE SOFTWARE OR SUCH OTHER INFORMATION. IN NO EVENT SHALL SONY IMAGING PRODUCTS & SOLUTIONS INC. BE LIABLE FOR ANY INCIDENTAL, CONSEQUENTIAL OR SPECIAL DAMAGES, WHETHER BASED ON TORT, CONTRACT, OR OTHERWISE, ARISING OUT OF OR IN CONNECTION WITH THIS MANUAL, THE SOFTWARE OR OTHER INFORMATION CONTAINED HEREIN OR THE USE THEREOF.

Sony Imaging Products & Solutions Inc. reserves the right to make any modification to this manual or the information contained herein at any time without notice.

The software described herein may also be governed by the terms of a separate user license agreement.

Trademarks

- Microsoft, Windows, and Internet Explorer are registered trademarks of Microsoft Corporation in the United States and/or other countries.
- Intel and Intel Core are trademarks or registered trademarks of Intel Corporation in the US and/or other countries.
- Apple, Mac OS, OS X, and Safari are trademarks of Apple Inc., registered in the US and other countries.
- Chrome is a registered trademark of Google Inc.
- The products or system names appearing in this document are trademarks or registered trademarks of their respective owners.

Table of Contents

Features	4
System Configurations	4
Operating Environment	6
Control PC	6
Client PC	6
Network Precautions	6
Setting Up	7
Optical Disc Archive System Device Setup	7
ODS-FM1 Setup	8
Security Settings	10
Displaying the Web Application.....	11

Features

ODS-FM1 is a software application for archiving and retrieving using an Optical Disc Archive System. You use this software to manage not just cartridges inserted in the Optical Disc Archive System, but also cartridges in shelf management.

ODS-FM1 operations are performed using a Web application. The application is accessed in a Web browser from a client PC.

This Installation Guide describes the software installation procedure for both the configuration using a network connection to the ODS-L10 or ODS-L30M¹⁾ and the configuration where a drive unit is connected directly to a computer.

1) ODS-L60E and ODS-L100E units can also be connected.

System Configurations

The basic system configurations for using ODS-FM1 are shown below.

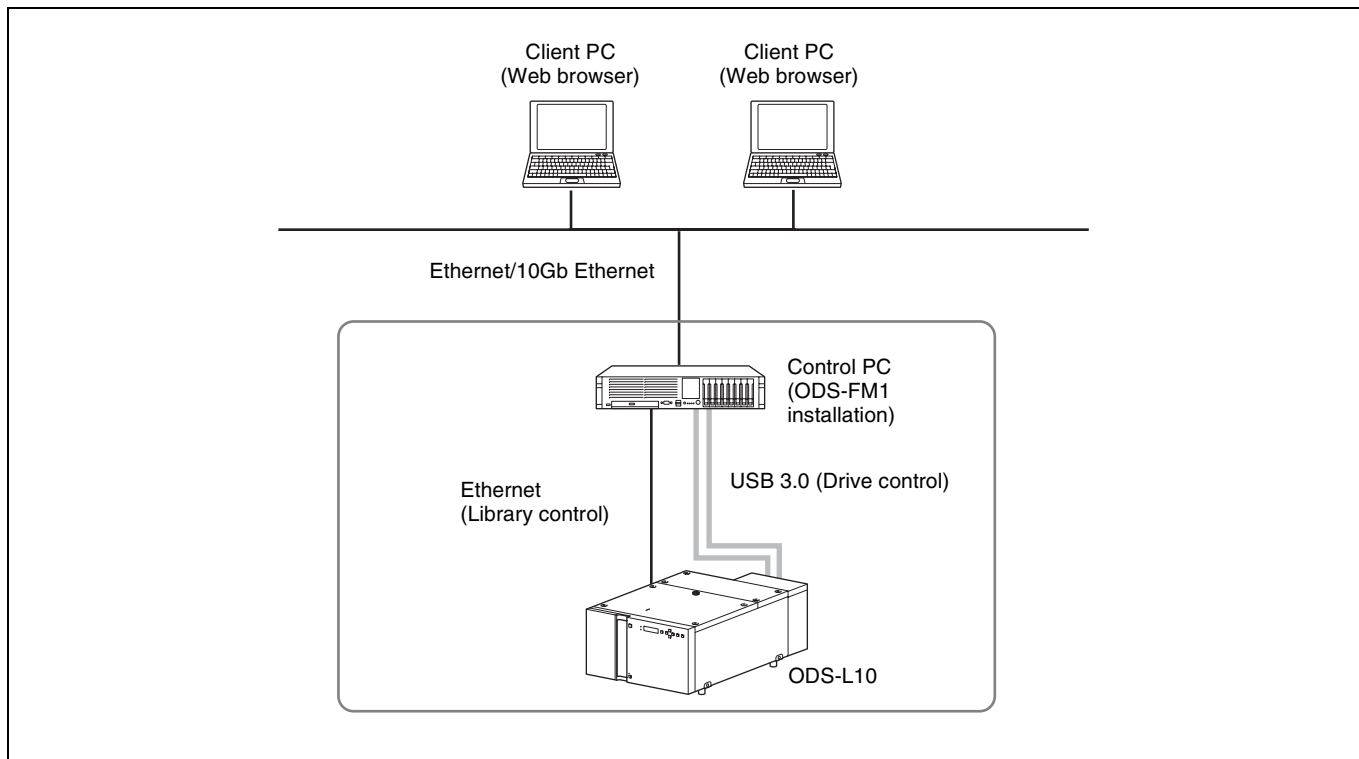
The computer on which ODS-FM1 is installed is referred to as the “control PC.” The control PC connects to the

Optical Disc Archive System in order to control the Optical Disc Archive System. You operate the ODS-FM1 by accessing the Control PC using a web browser on a client PC.

Connection to ODS-L10

The control PC connects to both the network that the ODS-L10 is on and the network that the Client PCs and network storage are on. In addition, the control PC

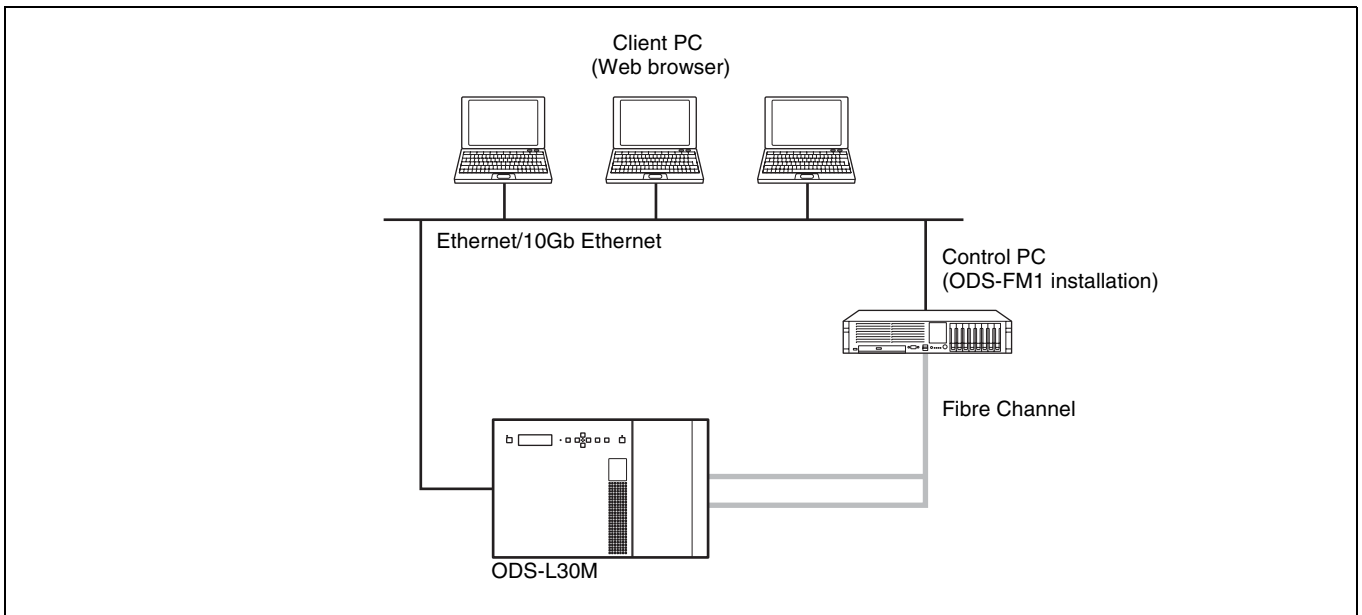
connects to each drive unit installed in the ODS-L10 using USB 3.0.



Connection to ODS-L30M

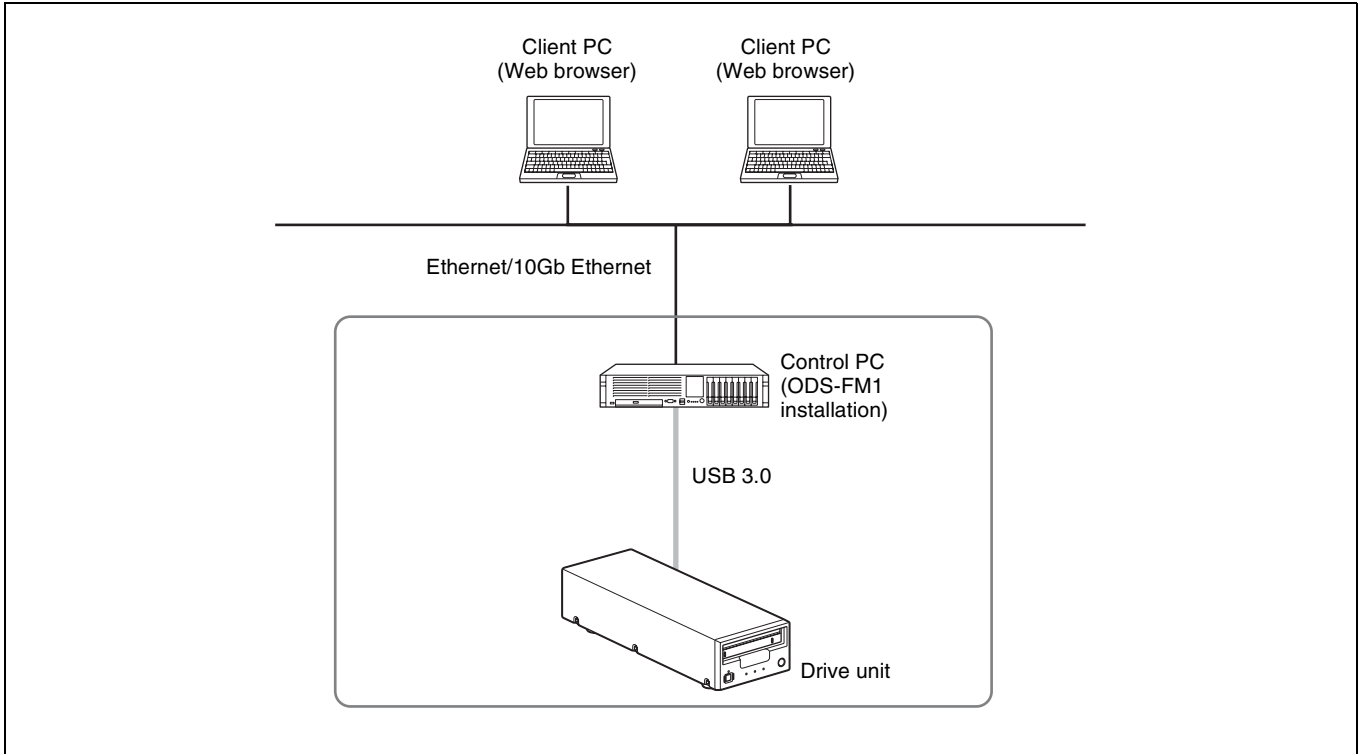
The drive unit installed in the ODS-L30M and control PC (server) connect using Fibre Channel.

The network, connecting the client PCs, connects to the control PC using Ethernet.



Direct connection to drive unit

The control PC connects directly to each drive unit using USB 3.0. In addition, the control PC connects to the network that the client PCs and network storage are on.



Operating Environment

The required operating environments for the control PC and client PCs is described below.

Control PC

CPU Intel Core i5 3 GHz or higher
Memory 4 GB
HDD capacity 200 GB
(Additional capacity of 2 TB/drive is required if archiving files from the local HD or retrieving to the local HDD)

OS

- ODS-L10 or drive unit connection:
 - Windows 7 Professional or later, 64-bit
 - Windows 8.1 Pro or later, 64-bit
 - Windows 10, 64-bit
 - Windows Server 2008 R2
 - Windows Server 2012
 - Windows Server 2012 R2
 - Windows Server 2016
- ODS-L30M connection:
 - Windows Server 2008 R2
 - Windows Server 2012
 - Windows Server 2012 R2
 - Windows Server 2016

Interface

- ODS-L10 connection:
 - Ethernet (2) (for connection to client PC and ODS-L10)
 - USB 3.0 × No. of drives
- ODS-L30M connection:
 - Ethernet (1) (for connection to client PC and ODS-L30M)
 - Fibre Channel HBA (Host Bus Adapter)
- Drive unit connection:
 - Ethernet (1) (for connection to client PC)
 - USB 3.0 × No. of drives

Client PC

Hardware Hardware supporting the following OS and Web browser without problem.
OS Windows 7, Windows 8.1, Windows 10
Mac OS X 10.9, 10.10, 10.11, macOS 10.12
Web browser Microsoft Internet Explorer 9/10/11, Microsoft Edge, Google Chrome, Safari 7/8/9/10

Network Precautions

This application could be accessed by any unintended third party on the network, depending on a usage environment. Please connect to a secure network.

Setting Up

This section describes the setup procedure for installing ODS-FM1 on the control PC in order to operate an Optical Disc Archive System using ODS-FM1.

Notes

- Update the ODS-L10/ODS-L30M firmware to the latest version.
- Update Optical Disc Archive Software and firmware of the drive units to the latest versions.

Optical Disc Archive System Device Setup

If control PC connects to ODS-L10

For details about ODS-L10 operation, refer to the ODS-L10 Installation Manual and Operation Manual.

- 1** Install a drive unit in the ODS-L10.

Up to two ODS-D55U or ODS-D77U units can be installed in the ODS-L10. ODS-D280U and models that use Fibre Channel cannot be installed.
- 2** Set the IP address of the ODS-L10.

For details about the setting method, refer to the ODS-L10 Operation Manual.
- 3** Install Optical Disc Archive Software on the control PC (PC on which to install ODS-FM1).
- 4** Install ODS-FM1 on the control PC.

Install the software by following the installer instructions.
- 5** Connect the drive unit, installed in the ODS-L10, and the control PC using a USB cable.

If there are two drive units installed, connect both drive units with the control PC.
- 6** Connect the network with the ODS-L10 to the network port on the control PC.

For details about network settings, refer to Windows documentation.
- 7** Insert optical disc cartridges in the ODS-L10.

If control PC connects to ODS-L30M

For details about ODS-L30M operation, refer to the ODS-L30M Operation Manual.

- 1** Install the ODS-D77F or ODS-D280F Drive Unit in the ODS-L30M.

A combination of up to two ODS-D77F and ODS-D280F units can be installed in the ODS-L30M. If you want to install three or more units, consult your Sony representative.
- 2** Set the IP address of the ODS-L30M.

For details about the setting method, refer to the ODS-L30M Operation Manual.
- 3** Install Optical Disc Archive Software on the control PC.
- 4** Install ODS-FM1 on the control PC.

Install the software by following the installer instructions.
- 5** Connect the ODS-D77F, installed in the ODS-L30M, to a Fibre Channel switch.

If there are two ODS-D77F or ODS-D280F drive units installed, connect both drive units to the Fibre Channel switch.
- 6** Connect the control PC to the Fibre Channel switch.
- 7** Insert optical disc cartridges in the ODS-L30M.

If control PC connects directly to drive unit

- 1** Install Optical Disc Archive Software on the control PC.
- 2** Install ODS-FM1 on the control PC.

Install the software by following the installer instructions.
- 3** Connect the drive unit and the control PC using a USB cable.
- 4** Insert optical disc cartridges in the drive unit.

ODS-FM1 Setup

The ODS-FM1 configuration and activation is performed using the Library Software Configuration Tool.

Note

You must be connected to the Internet to activate the software. If the control PC is not connected to the Internet, prepare another PC that can connect to the Internet.

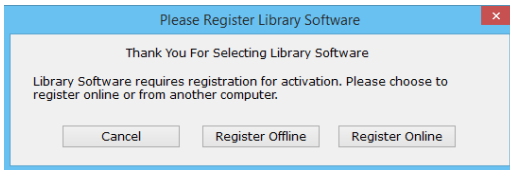
- 1 On the control PC, select “Config Tool” from the Start menu or double-click C:\Program Files\Sony\ODAFFileManager\ConfigTool.exe to launch the Library Software Configuration Tool.

Start the Library Software Configuration Tool from an account that has administrator privileges.

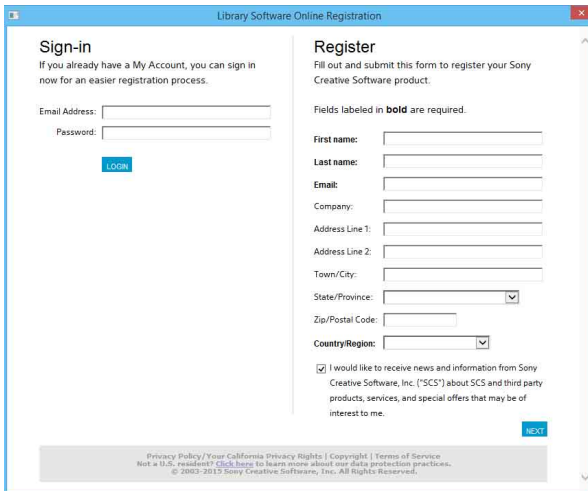
- 2 Activate the software, if this is the first time you have launched the Library Software Configuration Tool.

If the control PC is connected to the Internet

- 1 Click [Register Online].



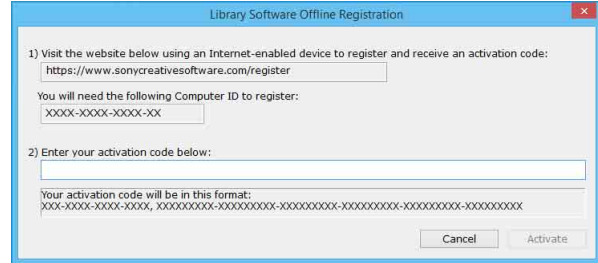
- 2 Enter the required items, then click [Next].



- 3 Enter the serial number, then click [Next].
The software is activated and the Library Software Configuration Tool starts.

If the control PC is not connected to the Internet

- 1 Click [Register Offline].
- 2 Enter the URL displayed in the [Library Software Offline Registration] dialog in a web browser on another PC that is connected to the Internet to display the web page.

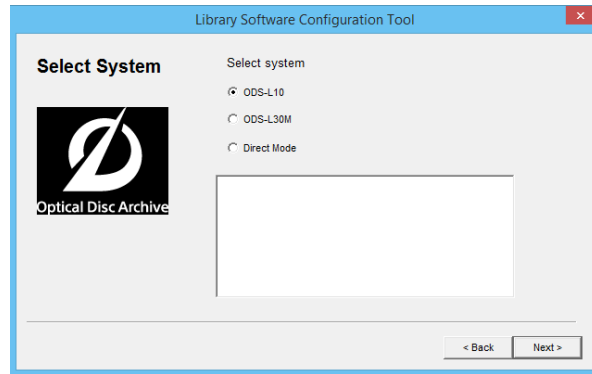


- 3 Enter and submit the serial number and computer ID (displayed in the [Library Software Offline Registration] dialog) in the web page to acquire the activation code.
- 4 Enter the activation code into the [Library Software Offline Registration] dialog on the control PC, then click [Activate].
The software is activated and the Library Software Configuration Tool starts.

- 3 Click [Next].

- 4 Select the system to connect on the Select System screen.

Select “Direct Mode” if connecting directly to the drive unit.



- 5 Click [Next] on the Database Initialization screen.

Database initialization is automatically performed. If “Direct Mode” or “ODS-L30M” is selected on the Select System screen, proceed to step 9. If “ODS-L10” is selected, proceed to the next step.

- 6 Enter the IP address configured on the ODS-L10 and the login ID (user name)/password for logging in to the ODS-L10, then click [Next].

The PC connects to the ODS-L10. The Drive Setting page appears if the connection is successful.

- 7 If a drive unit is connected to the control PC but is not installed in the ODS-L10, disconnect it from the control PC in order to do a drive check.

- 8 Click [Next].

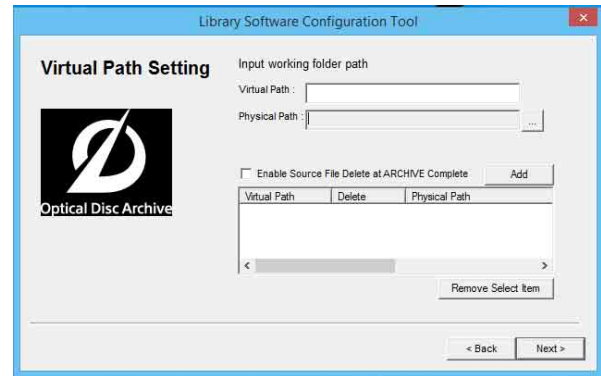
The drive check starts. If there is only one drive unit installed in the ODS-L10, a confirmation message appears asking whether it is located in the top or bottom slot. If installed in the bottom slot, click [Yes]. If installed in the top slot, click [No]. The Administrator Setup screen appears when the drive check is finished.

- 9 Create an account to use when logging in to the ODS-FM1. Enter the login ID and password, then click [Next].



- 10 Specify the root folder (base path) to be displayed on the ODS-FM1 Archive screen.

Only the files/folders under the specified base path are displayed on the Archive screen. Restricting the folders that are displayed prevents system files being changed in error. Multiple base paths can be specified.



Virtual Path: Enter a name for the base path to be displayed on the Archive screen.

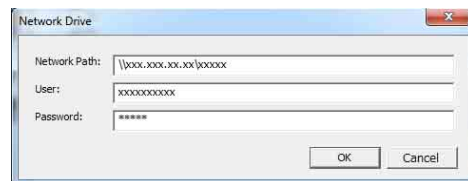
Physical Path: Specify the physical path for the base path to be displayed. You can also specify a network drive.

Enable Source File Delete at ARCHIVE Complete: Select whether to automatically delete the file after archiving. If not selected, the archived file remains and must be deleted manually when no longer needed.

Add button: Adds the base path with the specified settings. The specified base path is added to the lower list.

To assign a network drive

- 1 Click the [...] button for the [Physical Path] item.
- 2 Click the [Network Drive] button in the [Reference] dialog.
- 3 Enter the path of the network drive in UNC format (\\server_name or IP_address\folder_name) in [Network Path] in the [Network Drive] dialog.



- 4 If required, enter a user name and password in [User] and [Password], respectively.
- 5 Click the [OK] button. The added network drive appears in the [Reference] dialog.

- ⑥ Select the network drive and click the [Select] button.
The [Reference] dialog closes, and the path of the selected network drive appears in the [Physical Path] item on the Virtual Path Setting page.
- ⑦ Specify [Virtual Path] and click the [Add] button.

11 After setting the base path(s), click [Next].

12 Click [Finish] when the configuration is finished dialog box appears.

13 Connect the network that the client PCs are on to a network port on the control PC.

If using a network connection to the ODS-L10, connect the client PCs to a different network than the ODS-L10.

The Optical Disc Archive System can now be operated using the Web application from a client PC.

Notes

- If anti-virus software or security software is installed on the control PC, inbound access on port 8080 from a client PC may be blocked. In this case, configure your security software to allow inbound access on port 8080. For details about configuration, refer to the operating instructions for your security software.
- If the ODS-L10 hardware configuration is changed or the drive unit connection is changed, ODS-FM1 will no longer work correctly. If this occurs, reconfigure the ODS-FM1 settings using the Library Software Configuration Tool.
- If ODS-L10 configuration settings are changed in the Setup menu of the web page or on the display on the front panel of the unit, reconfigure ODS-FM1 using the Library Software Configuration Tool.
- Optical Disc Archive Filer cannot be started when using ODS-FM1. To use Optical Disc Archive Filer, first terminate the ODS-FM1 service and then start Optical Disc Archive Filer. (Optical Disc Archive Filer is included with Optical Disc Archive Software.)

Security Settings

The following firewall settings are recommended in order to block connections to MySQL from an external source.

1 Select [Control Panel] > [System and Security] > [Windows Firewall] > [Advanced settings] > [Inbound Rules] > [New Rule...].

2 Configure the following in the New Inbound Rule Wizard.

- Rule Type: Select [Port].

- Protocol and Ports: Select [TCP] and [Specific local ports] (enter port “3306”).
- Action: Select [Block the connection].
- Profile: Select all.
- Name: Enter “MySQLPort” name.

3 Click [Finish].

4 Select [New Rule...] again to display the New Inbound Rule Wizard, and configure the following.

- Rule Type: Select [Port].
- Protocol and Ports: Select [UDP] and [Specific local ports] (enter port “3306”).
- Action: Select [Block the connection].
- Profile: Select all.
- Name: Enter “MySQLPort” name.

5 Click [Finish].

Displaying the Web Application

Display a Web browser on the client PC, and enter “http://(control PC IP address):8080/” into the address bar. The login screen appears when the Web browser connects to the control PC. Enter the username and password configured in the Library Software Configuration Tool to log in.

